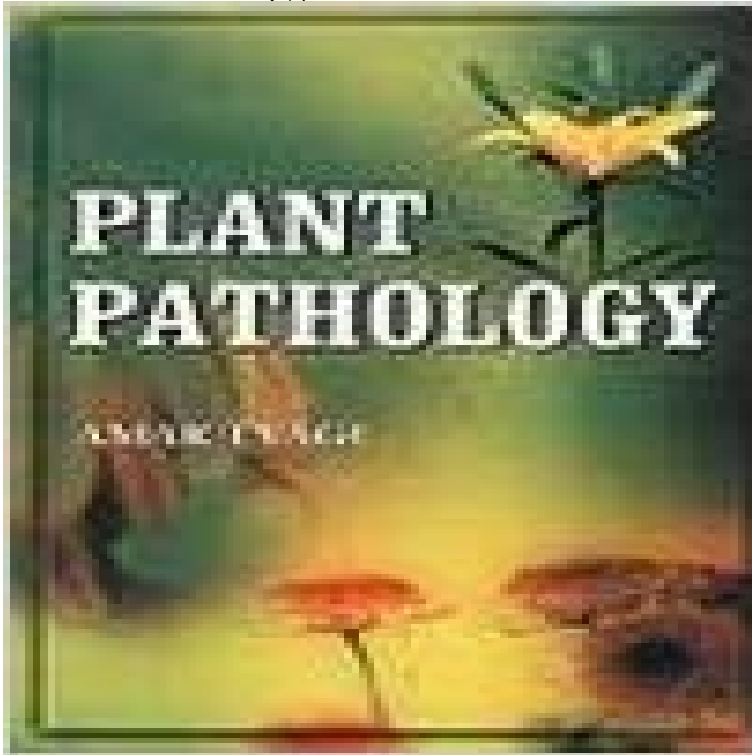


# Plant Pathology



[\[PDF\] In Mendels Mirror: Philosophical Reflections on Biology](#)

[\[PDF\] Essentials of Genetics](#)

[\[PDF\] Leaf-mining Insects.](#)

[\[PDF\] Manual for Short-term Psychoanalytic Child Therapy \(PaCT\)](#)

[\[PDF\] Natural history. For the use of schools and families. By Worthin](#)

[\[PDF\] Sud-, Mittel- Und Ostafrikanische Säugetiere in Bild Und Text \(Southern, Central and East African Mammals: a Photographic Guide\) \(Photographic Guides\) \(German Edition\)](#)

[\[PDF\] Euclids Elements in Greek: Vol. I: Books 1-4](#)

**Department of Plant Pathology** Open Position: Assistant/Associate Specialist in Cooperative Extension: Now accepting applications here. Bocce Champions: Gilbertson Lab. **Australasian Plant Pathology - Springer** Plant Pathology and Microbiology Plant Pathology and Microbiology Phone (515) 294-1741. FAX (515) 294-9420 plpm@351 Bessey Hall **Plant Pathology Plant Pathology** As one of the largest departments of plant pathology in the United States, we are recognized internationally for our comprehensive and integrative research and **Plant Pathology** Australasian Plant Pathology presents new and significant research in all facets of the field of plant pathology. Dedicated to a worldwide readership, the journal **Plant Pathology - UGA CAES - University of Georgia** The University of Floridas Institute of Food and Agricultural Sciences (UF/IFAS) is a federal-state-county partnership dedicated to developing knowledge in **Department of Plant Pathology College of Agricultural, Human, and** Plant Pathology is an international journal owned and edited by the BSPP which covers all aspects of plant pathology and reaches subscribers in 80 countries. **Department of Plant Pathology University of Wisconsin-Madison** Nematode diseases of plants disease threats, detection and control This virtual issue of Plant Pathology contains a review and original research papers on nematodes as plant pathogens. **Home Plant Pathology Kansas State University** Plant Pathology is the study of plants and their pathogens, the process of disease, and how plant health and disease are influenced by factors such as the **Plant Pathology - University of Florida, Institute of Food and** The Graduate Program of Plant Pathology at the University of California, Riverside aims at conducting research on the basic biology of plant pathogens **Plant Pathology Department University of NebraskaLincoln** It is the mission of Plant Pathology-ETH. To understand the evolutionary processes affecting plant pathogens in their interactions with host plants in order to **Plant Pathology Graduate Program: Home** The Department of Plant Pathology performs an essential role in improving and monitoring

the health of plants grown for economic, environmental, and amenity **Department of Plant Pathology and Environmental Microbiology** The Department of Plant Pathology offers programs of study leading to BS, MS and PhD degrees. Advanced degrees may involve specialized **Faculty Department of Plant Pathology** Welcome to the Department of Plant Pathology, where our innovative Research, Education and Extension outreach programs focus on plant diseases, **Plant pathology - Wikipedia** Plant Pathology and Environmental Microbiology News. Penn State Joins International Phytobiomes Alliance. June 6, 2017. Penn State joined the International **Careers In Plant Pathology - American Phytopathological Society** 2017 - Volume 66 Plant Pathology 2016 - Volume 65 Plant Pathology 2015 - Volume 64 Plant Pathology 2014 - Volume 63 Plant Pathology 2013 - Volume **Plant Pathology College of Agricultural and Life Sciences** Plant pathology (also phytopathology) is the scientific study of diseases in plants caused by pathogens (infectious organisms) and environmental conditions (physiological factors). **European Journal of Plant Pathology - Springer** As a PhD student in the Department of Plant Pathology, I recently attended the Tilth Conference in Wenatchee, which provided me the opportunity to hear great **Plant Pathology - Wiley Online Library** Plant Disease Diagnostic Clinic Do you know what disease this plant has? Click here to Vegetable Pathology Research Microbiologist position available. **UC Davis Department of Plant Pathology University of California** Professor, Robert Earle Buchanan Distinguished Professor of Bacteriology for Research and Nomenclature. Plant Bacteriology, Microbial Ecology, **The BSPP - Plant Pathology** Educate and prepare leaders in the STEM fields of plant and environmental health Plant Pathology is the STEM field focused on science on plant health and **Molecular Plant Pathology - Wiley Online Library** The BSPP is a learned society, founded for the study and advancement of plant pathology. **Plant Pathology and Microbiology** The European Journal of Plant Pathology is an international journal publishing original articles in English dealing with fundamental and applied aspects of plant **Plant Pathology ETH Zurich: Homepage** See why undergraduate students have found Plant Pathology courses to be essential for preparing them for a career working with plants. Watch the videos **Plant Pathology - All Issues - Wiley Online Library** Students are always welcome to contact Plant Pathology Departments in your area for a tour and one-on-one introduction to some of the top scientists in the field **British Society for Plant Pathology** Email: margaret\_daub@, Plant-fungal interactions. Eric-Davis, Eric (Rick) Davis W. N. Reynolds Distinguished Professor and Department Head **Plant pathology - Wikipedia** Welcome to the Department of Plant Pathology. We are a department of plant and microbial scientists, teaching and experimenting alongside our students, the **People Plant Pathology and Microbiology** The Journal of Plant Pathology (JPP) is the international journal of the Italian Phytopathological Society (.V), covering fundamental and applied aspects of